

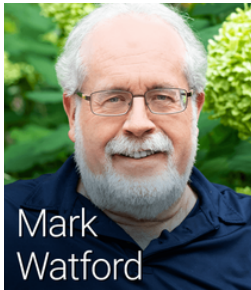


OCEAN RESORT
CHARITABLE TRUST

2021 IMPACT REPORT

Ka'anapali Ocean Resort Charitable Trust | 1099 Alakea Street, Suite 2530
Honolulu, Hawaii 96813 | (808) 447-1840 | www.korfhawaii.org

02



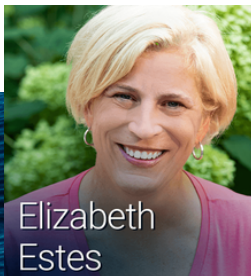
Mark
Watford

ABOUT KA'ANAPALI OCEAN RESORT CHARITABLE TRUST

Guided by its trustees, the mission of the trust is to demonstrate ho'okipa (hospitality) and mālama (to care for, serve, honor, protect) our Maui 'ohana (family) by supporting local community needs. We embrace lōkahi (unity, unanimity of agreement) and ho'ohanohano (honoring the dignity of others). We hope to enhance the kalāhikiola (optimism, hope, promise) of Maui and its people.



Beth
Brill



Elizabeth
Estes

TRUSTEES & ADVISORS

The trust is overseen by its Chair Mark Watword and trustees Beth Brill, Elizabeth Estes, Mary Fechtig, and Angela Nola. They are advised by an executive director team at Hawai'i Public Policy Advocates, LLC: Melissa Pavlicek and Arlina Agbayani and the General Manager of the Ka'anapali Ocean Resort Ryan Nobriga.



Mary
Fechtig

The trustees are also advised by Certified Public Accountant Stacey Katakura at Accumulus and Wells Fargo Advisors Brice Logan and Westley Yamasaki.



Angela
Nolan

03

HOUSING:



In 2021, the trust contributed \$25,000 to Ka Hale A Ke Ola which is dedicated to serving the needs of the homeless on Maui by providing emergency shelter, food, housing, and empowering participants to take responsibility for their own lives

Ka Hale A Ke Ola provided shelter to 864 people, placed 294 families in permanent housing, and annually provides more than 40,000 meals.

1. Every \$25 fed a dinner to a family.
2. Each \$50 provided towels, bedding and pillowcases to a family at the shelter.
3. Each \$100 bought medical supplies for wound care and infections to help the unsheltered using the mobile hygiene unit.
4. A shelter night for individuals or a family was provided by \$250.

FOOD SECURITY:



The trust contributed \$35,000 in 2021 to Feed My Sheep Maui and the Maui Food Bank, facilitating the delivery of more than 25,000 meals. The impact of a meal delivery is felt on the personal level. Said one individual, "I was unemployed for over a month and went into a deep hole. I was out of money and food. Feed My Sheep rescued me big time."

04

EDUCATION:



The trust contributed \$36,500 to promote education in 2021:

1. Seventy-eight Maui high school students were enrolled in the Cornell University/ClimbHi certificate program.
2. Ten Maui high school students were provided scholarships the the Maui Hotel & Lodging Association's Academy of Hospitality & Tourism (AOHT) scholarship program.
3. The South Maui Learning Ohana was provided funding to support one of the state's highest performing public charter schools in Kihei.
4. An early learning center was supported in delivery childcare services to more than 50 children aged 3 - 4.

WORKFORCE DEVELOPMENT:



The Kā'anapali Ocean Resort Charitable Trust made a third donation to the University of Hawai'i Maui College workforce development initiative known as Ka Holu, in the amount of \$25,000. The gift supports training, certification testing fees for Career and Technical Education graduates, and expenses when graduates need to travel for certification tests only given off-island.

05

ENVIRONMENT:



The trust contributed \$65,000 to preserving, protecting, and promoting the environment.

The trust donated \$40,000 to the University of Hawai'i Maui College Water Quality Lab. The funding was used to purchase a peristaltic pump for filtering seawater; a laboratory furnace for combustion of bottles; general laboratory supplies for operations and analysis of nutrients, biological oxygen demand, E.coli and total suspended solids; and will also fund a student internship in the lab. The trust provided \$10,000 in operating funds for the Pu'u Kukui watershed preservation and \$15,000 to the Pacific Whale Foundation which conducts Maui-based conducts research, education and conservation programs.

BROADER COMMUNITY:



Contributions for disaster relief, animal welfare, maintenance of the Nisei Veteran's Memorial, and the Maui United Way by the trust totaled \$80,000 in 2021. Included was a \$10,000 contribution to the Boys & Girls Clubs of Maui which conducted virtual and in-person youth programs to support hundreds of middle- and high-school students during the pandemic.

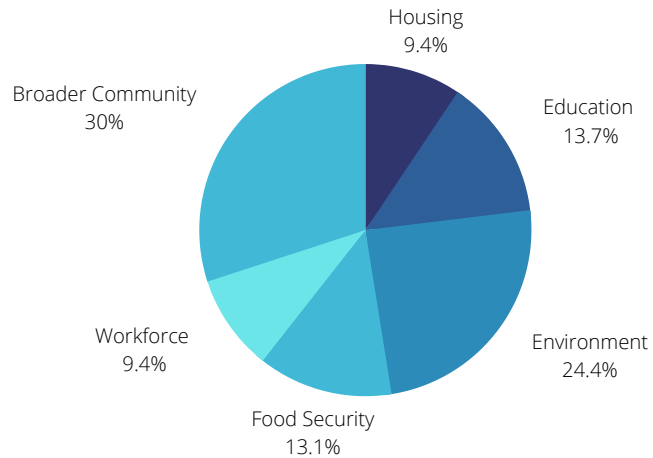
06

QUOTABLE:

“Supporting Maui workforce development is a top priority for both the property owners who contribute to the Kā’anapali Ocean Resort Charitable Trust and all its trustees.”

MELISSA PAVLICEK, EXECUTIVE DIRECTOR
KA’ANAPALI OCEAN RESORT CHARITABLE TRUST

BY THE NUMBERS:



Housing	\$25,000
Food Security	\$35,000
Education	\$36,500
Workforce Development	\$25,000
Environment	\$65,000
Broader Community	\$80,000
Charitable Contributions 2021:	\$266,500

07

2021 Recipient Organizations:

- American Red Cross
- Boys & Girls Clubs
- Children's Miracle Network
- ClimbHi
- Easter Seals Maui
- Feed My Sheep
- First Tee of Hawaii
- Girl Scouts of Hawaii
- Hale a ke Ola
- Kahi Kamali'i Early Learning
- Maui College (Ka Holu)
- Maui Foodbank
- Maui Hotel & Lodging Association
- Maui Humane Society
- Maui United Way
- Nisei Veterans Memorial
- Pacific Whale
- Paia Youth Council
- Pu'u Kukui Watershed
- South Maui Learning Ohana
- University of Hawai'i Foundation

GALLERY:



Kā'anapali Ocean Resort Charitable Trust, its trustees, and donors provided charitable contributions to 21 organizations serving the Maui community. Pictured above top to bottom: Maui College, South Maui Learning Ohana, and Ka Hale a ke Ola.



OCEAN RESORT
CHARITABLE TRUST

Federal Employer Identification Number
82-3049192

Ka'anapali Ocean Resort Charitable Trust
1099 Alakea Street, Suite 2530
Honolulu, Hawaii 96813 | (808) 447-1840
www.korfhawaii.org